



20 Wingfield Street Windermere Park NSW

4 🏠 1 🚗 1 🚗

Welcome to 20 Wingfield Street, Windermere Park, where a low-maintenance and tastefully renovated home awaits its lucky new owners.

Perfectly positioned on the water's edge, this property is set on a generous 644m² block, offering a captivating Lake Macquarie lifestyle without the hefty price tag. Nestled within the lakeside suburb of Windermere Park, it provides an ideal setting for a close-knit family to create lasting memories.

Conveniently situated a mere 100 meters from Lake Macquarie's waters (accessible by boat), this property offers easy access to local bush trails, numerous boat ramps on the beautiful Morisset Peninsula, and a quick drive or walk to Bonnells Bay Shopping Centre. (Coles, Australia Post, pharmacy, butcher, restaurants and

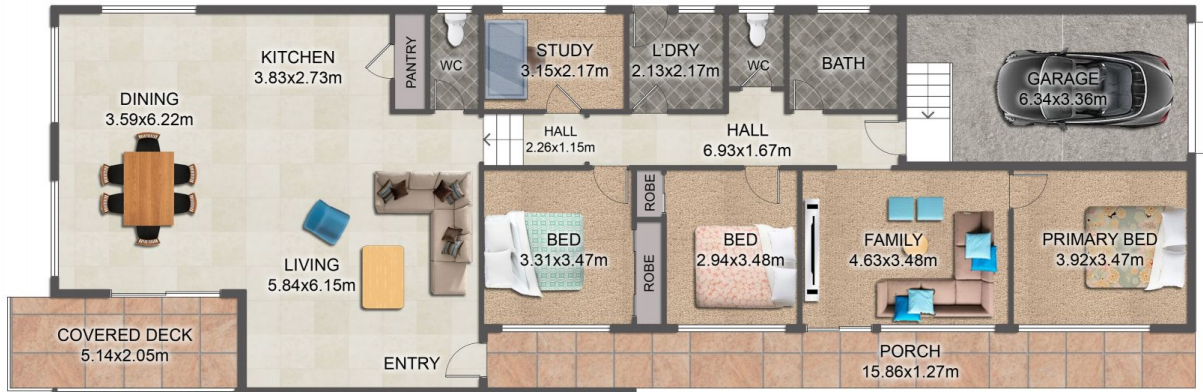
Price : New to Market
Land Size : 664 sqm
View : <https://www.ellejayne.com.au/sale/nsw/lake-macquarie-west/windermere-park/residential/house/8047182>



Sally Wrigley
(02) 4973 2775



Jayse Russo
(02) 4973 2775



FLOOR PLAN

This floor plan including furniture, fixture measurements and dimensions are approximate and for illustrative purposes only. BoxBrownie.com gives no guarantee, warranty or representation as to the accuracy and layout. All enquiries must be directed to the agent, vendor or party representing this floor plan.

20 Wingfield Street, Windermere Park