



58 & 58A Mountain Ash Drive Cooranbong NSW

5  3  2 

Located in the thriving suburb of Cooranbong, this modern dual occupancy property offers a modern investment with outstanding yield (conservative approximation of 5%)

Ranked #4 in Newcastle/Lake Macquarie for capital growth over the past five years with 84.5% (source: Newcastle Herald - June 2024), Cooranbong is proven as a blue-chip suburb for investment with the outstanding yield of the property offering a quality rental income.

Savvy investors will quickly identify the immediate potential of this home, and with vacancy rates at all time lows, high quality tenants will be lining up to secure this modern home.

Features include, but are not limited to:

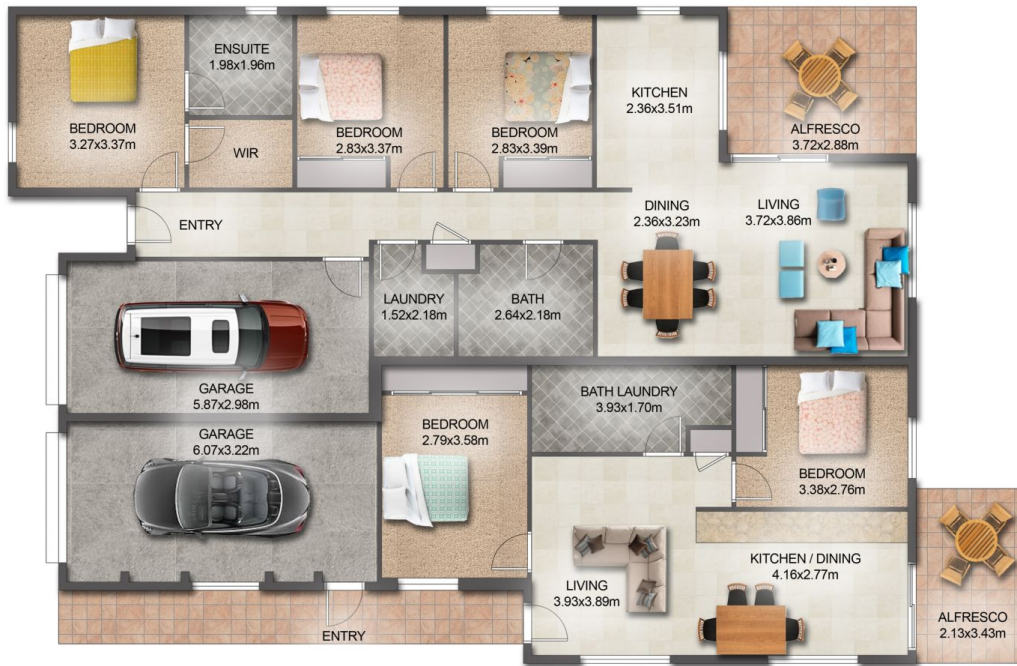
Price : \$ 1,030,000
Land Size : 558 sqm
View : <https://www.ellejayne.com.au/sale/nsw/lake-macquarie-west/cooranbong/residential/semi-detached/8030175>



Ben Wrigley
1300 322 366



Kaine Robinson
0401199636



FLOOR PLAN

This floor plan including furniture, fixture measurements and dimensions are approximate and for illustrative purposes only. BoxBrownie.com gives no guarantee, warranty or representation as to the accuracy and layout. All enquiries must be directed to the agent, vendor or party representing this floor plan.

58 & 58a Mountain Ash Drive, Cooranbong